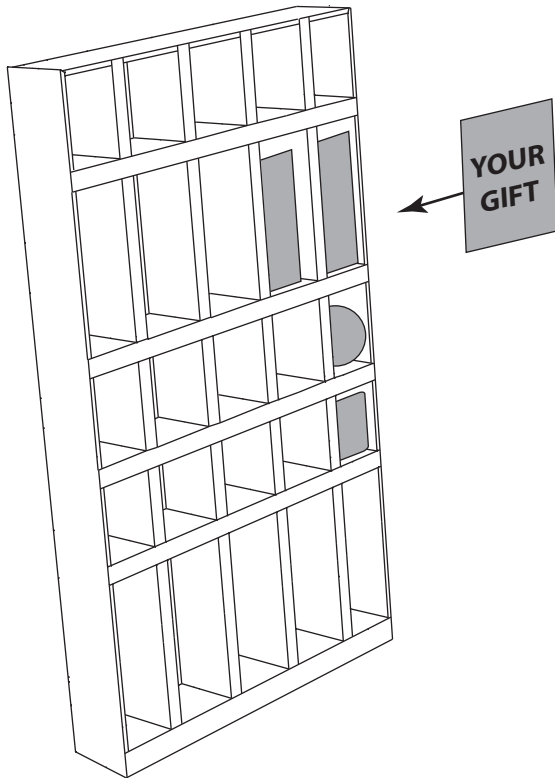
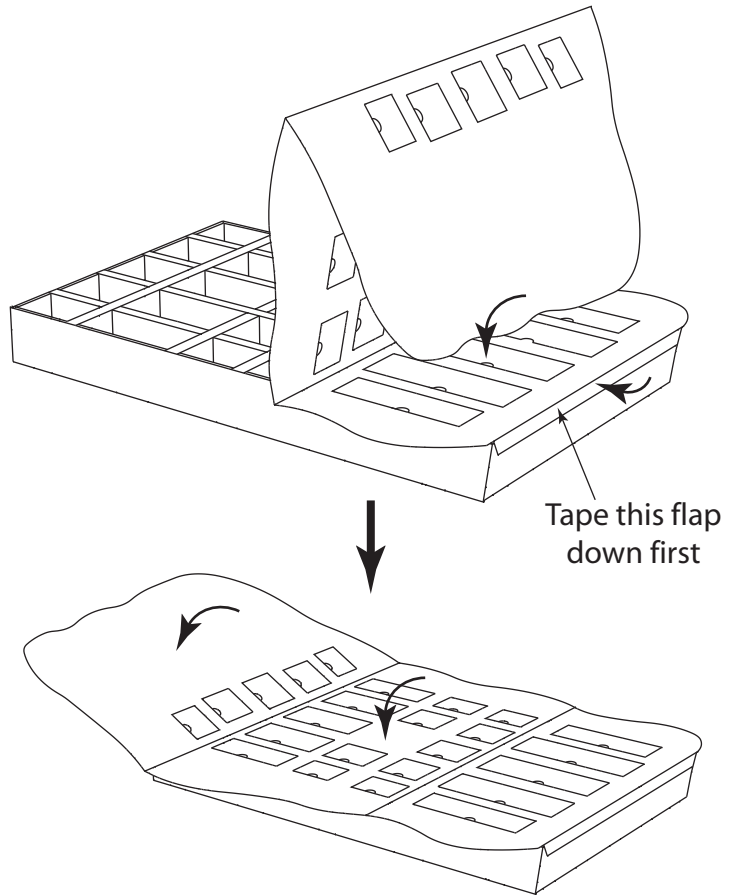


FATHER CHRISTMAS AND SACK ADVENT CALENDAR ASSEMBLY INSTRUCTIONS

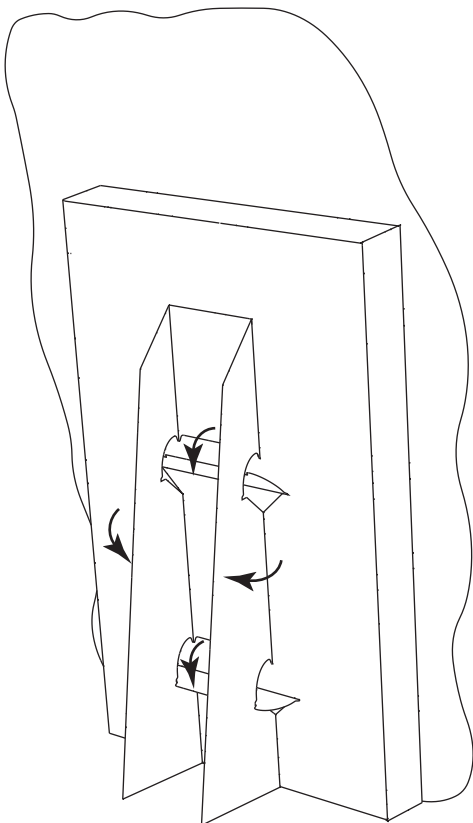
PLEASE READ INSTRUCTIONS CAREFULLY BEFORE COMMENCING



1. Place gifts into tray.



2. Lay tray on its back to attach front panel. Unfold cover over tray and get in the correct position by taping flap along bottom edge to underneath of tray first then slowly release tape on tray as you unfold and press the cover into place as shown.



3. Fold in wings of strut on rear of unit then fold down locking panels.



4. Finished unit.