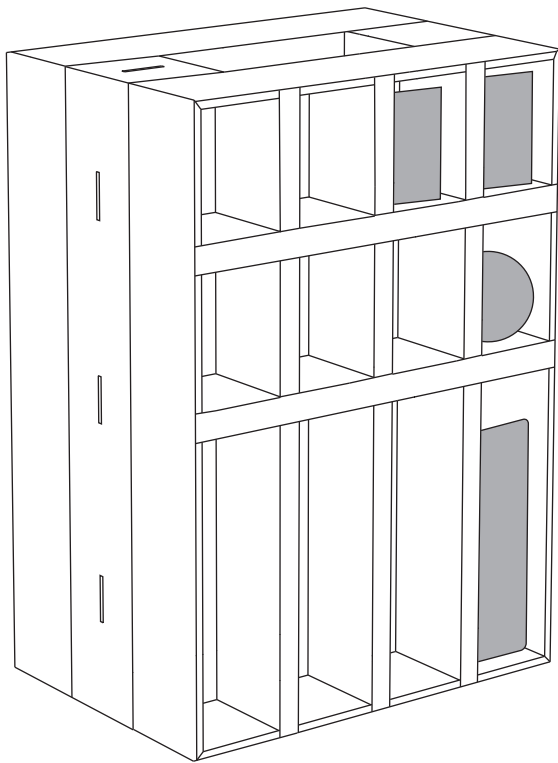
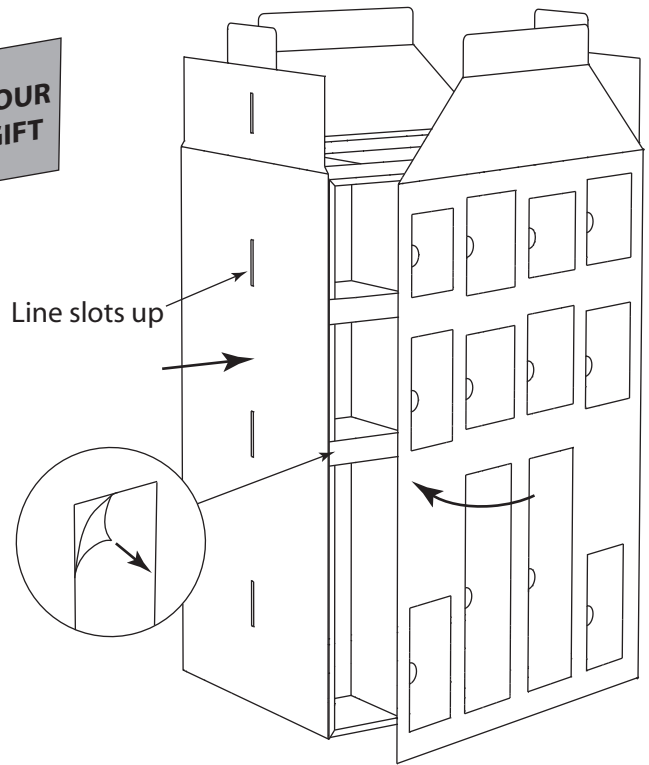


# FATHER CHRISTMAS & CHIMNEY ADVENT CALENDAR ASSEMBLY INSTRUCTIONS

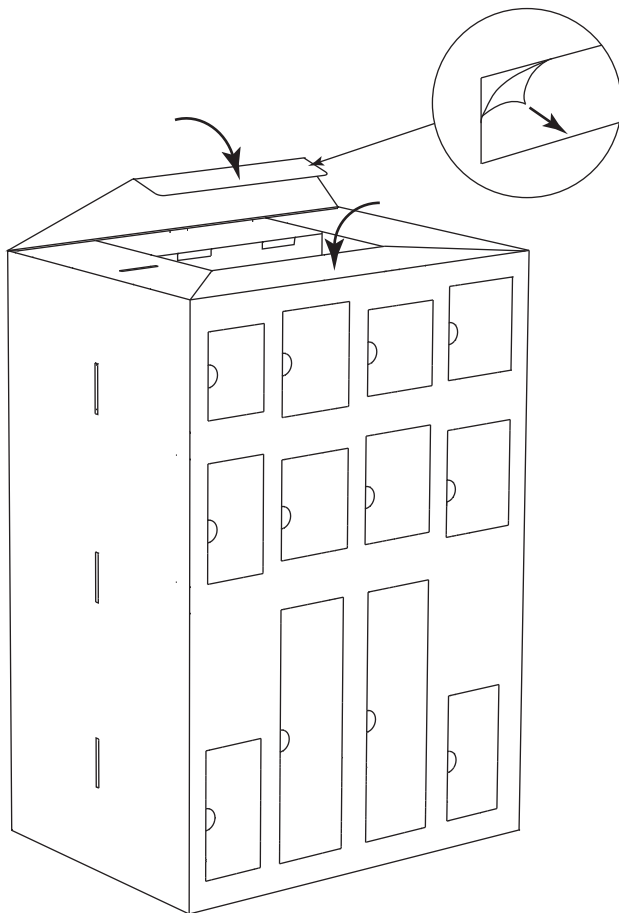
PLEASE READ INSTRUCTIONS CAREFULLY BEFORE COMMENCING



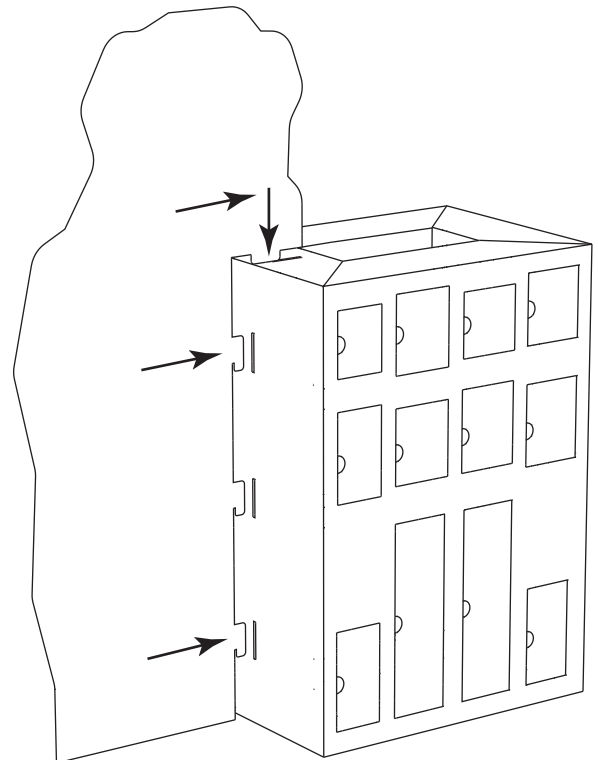
1. Place gifts into trays on either side of unit.



2. Attach graphics panel to unit by peeling backing paper from double sided tape then start by sticking down panel with slots, taking care to line up properly, followed by subsequent panels, wrapping round and ensuring pockets are in correct position over apertures.



3. Peel backing paper from double sided tape on inside of top panels then fold down panels coming off side walls first followed by panels coming of main walls, sticking down inside unit.



4. Attach Father Christmas character by inserting tabs into slots in side wall first, then slide down to lock, inserting top tab into slot in the process.